



# MONTHLY MEMBERSHIP PROGRESS REPORT

District 18 L

Results as of: 9/30/2016

GMT: HARVEY WHITLEY

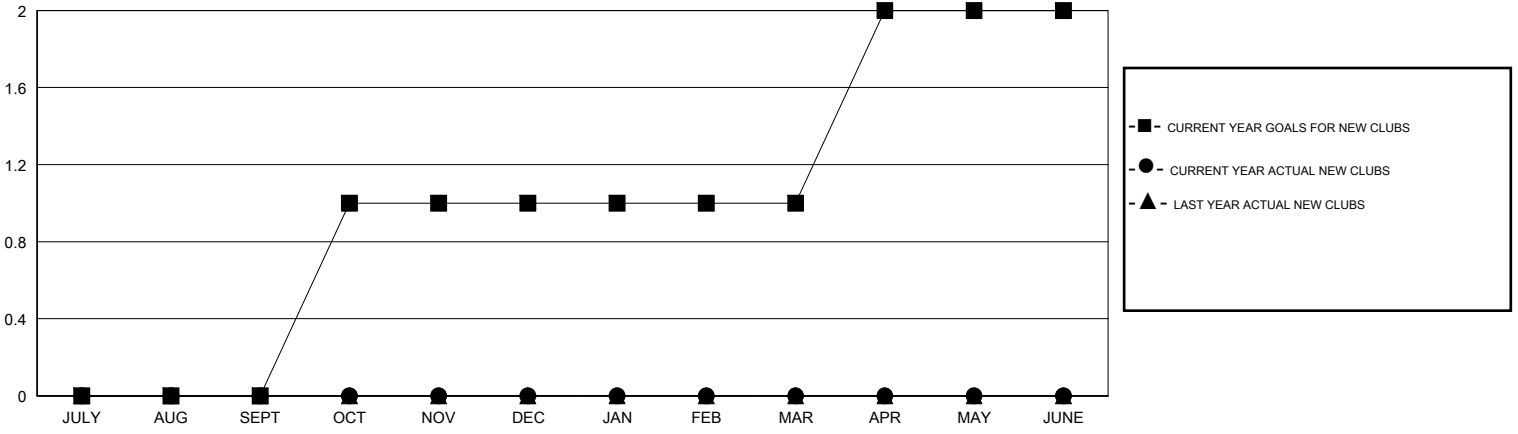
LOCATION GEORGIA

GMT CA 1

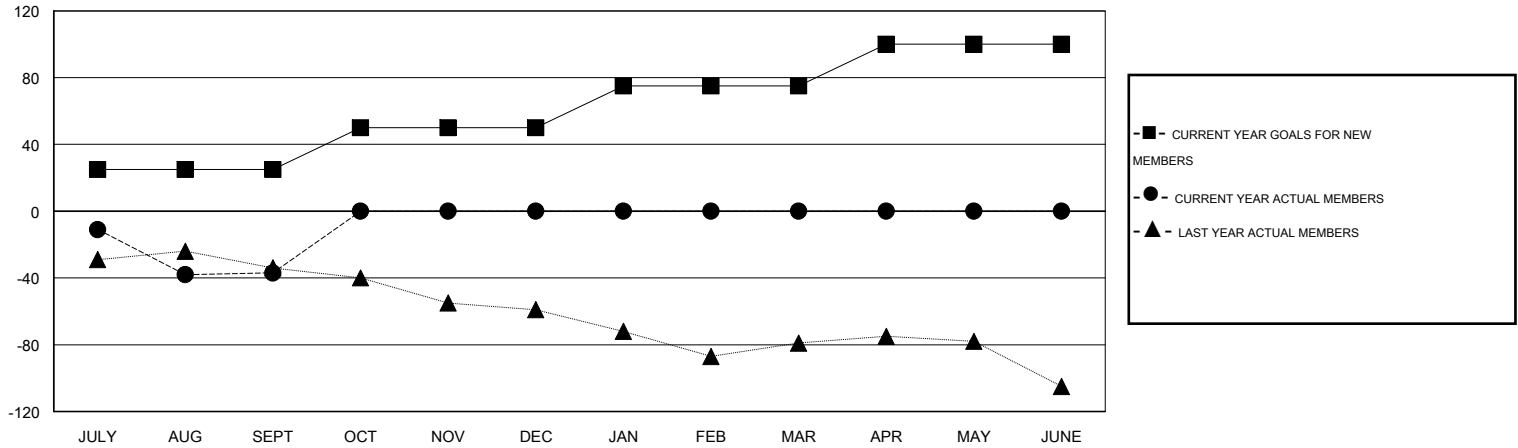
Clubs				
RESULTS FOR 2016-2017				
QUARTER	NEW CLUB GOAL	NEW CLUBS	DROPPED CLUBS	NET GAIN/LOSS
JULY/AUG/SEPT	0	0	0	0
OCT/NOV/DEC	1	0	0	0
JAN/FEB/MAR	0	0	0	0
APR/MAY/JUNE	1	0	0	0

Members				
RESULTS FOR 2016-2017				
QUARTER	NEW MEMBER GOAL	CHARTER AND NEW MEMBERS ADDED	DROPPED MEMBERS	NET GAIN/LOSS
JULY/AUG/SEPT	25	59	96	-37
OCT/NOV/DEC	25	0	0	0
JAN/FEB/MAR	25	0	0	0
APR/MAY/JUNE	25	0	0	0

GOALS AND ACTUAL NEW CLUBS CUMULATIVE



GOALS AND ACTUAL MEMBERS CUMULATIVE



DROPPED CLUBS: 0	
<u>DROPPED MEMBERS</u>	
DECEASED	8
CLUB CANCELLED	0
OTHER	87
<b>TOTAL</b>	<b>95</b>

20 CLUBS OF 48 ADDED 1 OR MORE NEW MEMBERS

[CLICK HERE FOR HEALTH ASSESSMENT DATA](#)

<u>GENDER DISTRIBUTION</u>	
MALE	876 (65.52%)
FEMALE	461 (34.48%)
<u>FAMILY UNIT MEMBERS</u>	
FAMILY UNIT MEMBERS	244
HEAD OF HOUSEHOLD	118
NON-HEAD OF HOUSEHOLD	126